

SNOWFILL RECREATION AREA BIKEFILL DESIGN PROPOSAL

V: 3.0

JULY 2020




01

VISION / TABLE OF CONTENTS

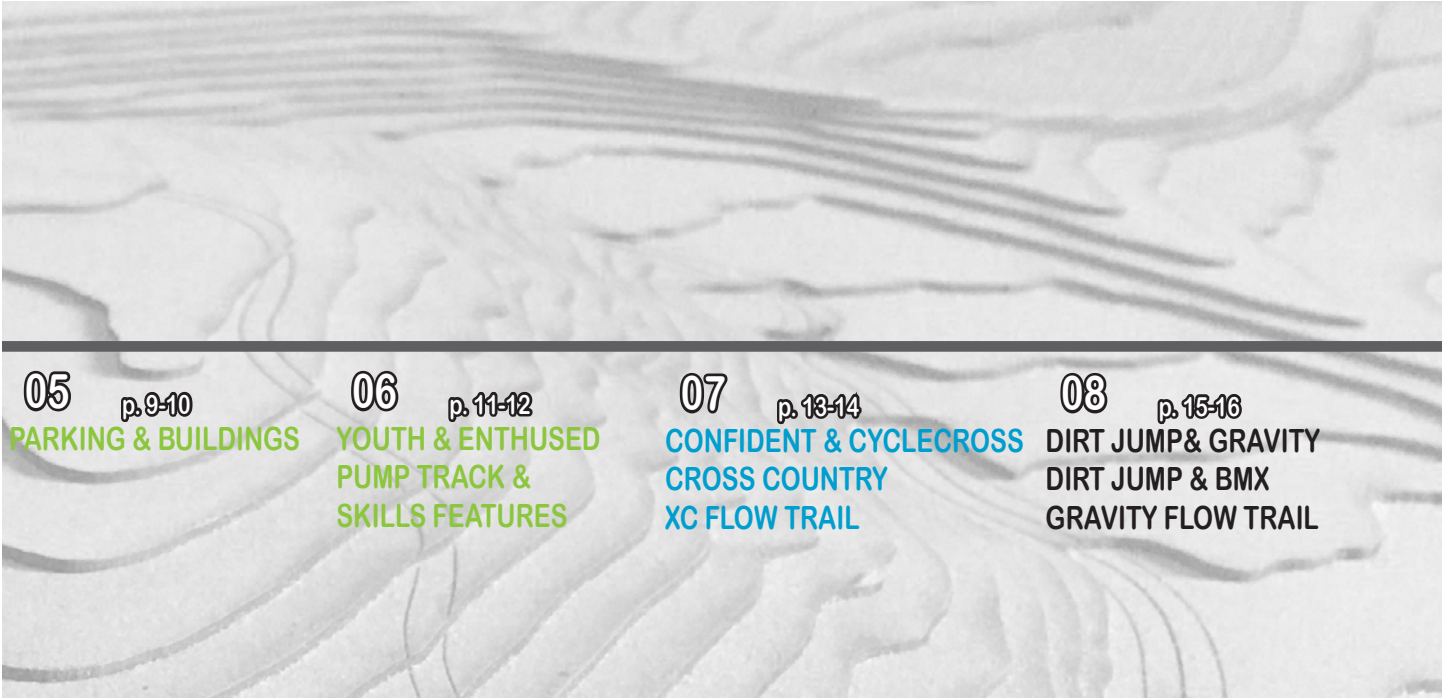
PROJECT BRIEF:

This document sets out a vision to make Bozeman a World-Class bicycle community. The intent of this vision is to inspire and improve collaboration among existing organizations land managers, businesses and community members by fostering a shared understanding of the critical component that makes up a strong bicycle community. Snow Fill Recreation Area more specifically “Bike Fill” is a communication and planning process that will happen over several phases of design and funding. The goal and objectives in this vision are launch pads for future planning, design and funding efforts

CONTENTS:



01	p. 1-2	02	p. 3-4	03	p. 5-6	04	p. 7-8
VISION & CONTENTS		SIX TYPES OF CYCLISTS & TRAIL TYPES		SITE & CONTEXT		ACCESS	



05

p. 9-10

PARKING & BUILDINGS

06

p. 11-12

YOUTH & ENTHUSED
PUMP TRACK &
SKILLS FEATURES

07

p. 13-14

CONFIDENT & CYCLECROSS
CROSS COUNTRY
XC FLOW TRAIL

08

p. 15-16

DIRT JUMP & GRAVITY
DIRT JUMP & BMX
GRAVITY FLOW TRAIL

SIX TYPES OF CYCLISTS / TRAIL TYPES



YOUTH



ENTHUSED



CONFIDENT

TRAIL TYPES:

Building great bicycle trails is part art and part science. Trail standards can help identify design strategies that can maximize user experience while coordinating with different user types and abilities. Great trail design not only enhances user experience, but can help streamline trail use and difficulty level by using familiar green, blue and black distinctions. These variety of trail types attract a wide variety of different cyclist types. The best way to achieve a successful design and layout is through a variety of trail features and mapping principals that include thoughtful considerations of trail connectivity, topography layout and access points.

PUMP TRACKS & SKILLS FEATURES



CROSS-COUNTRY & XC FLOW TRAILS





CYCLE-CROSS/GRAVEL

CYCLE-CROSS &
STAIR FEATURES



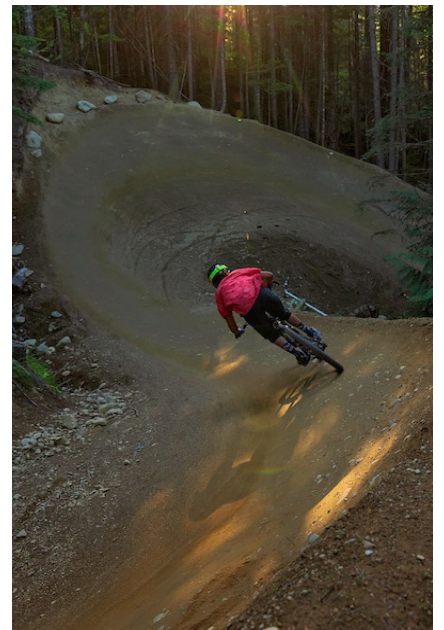
DIRT JUMP/BMX

DIRT JUMP/BMX &
RHYTHM FEATURES



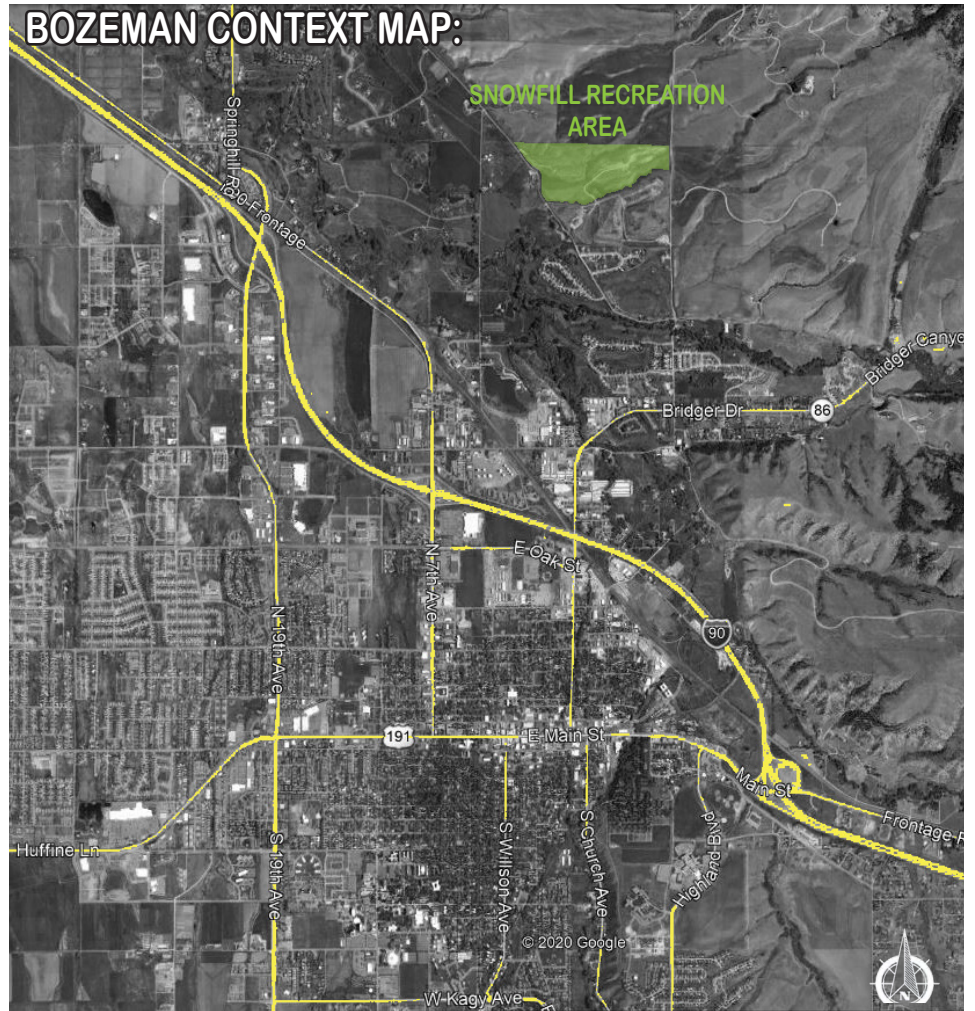
GRAVITY/FREERIDE

GRAVITY & FREERIDE
FLOW TRAILS

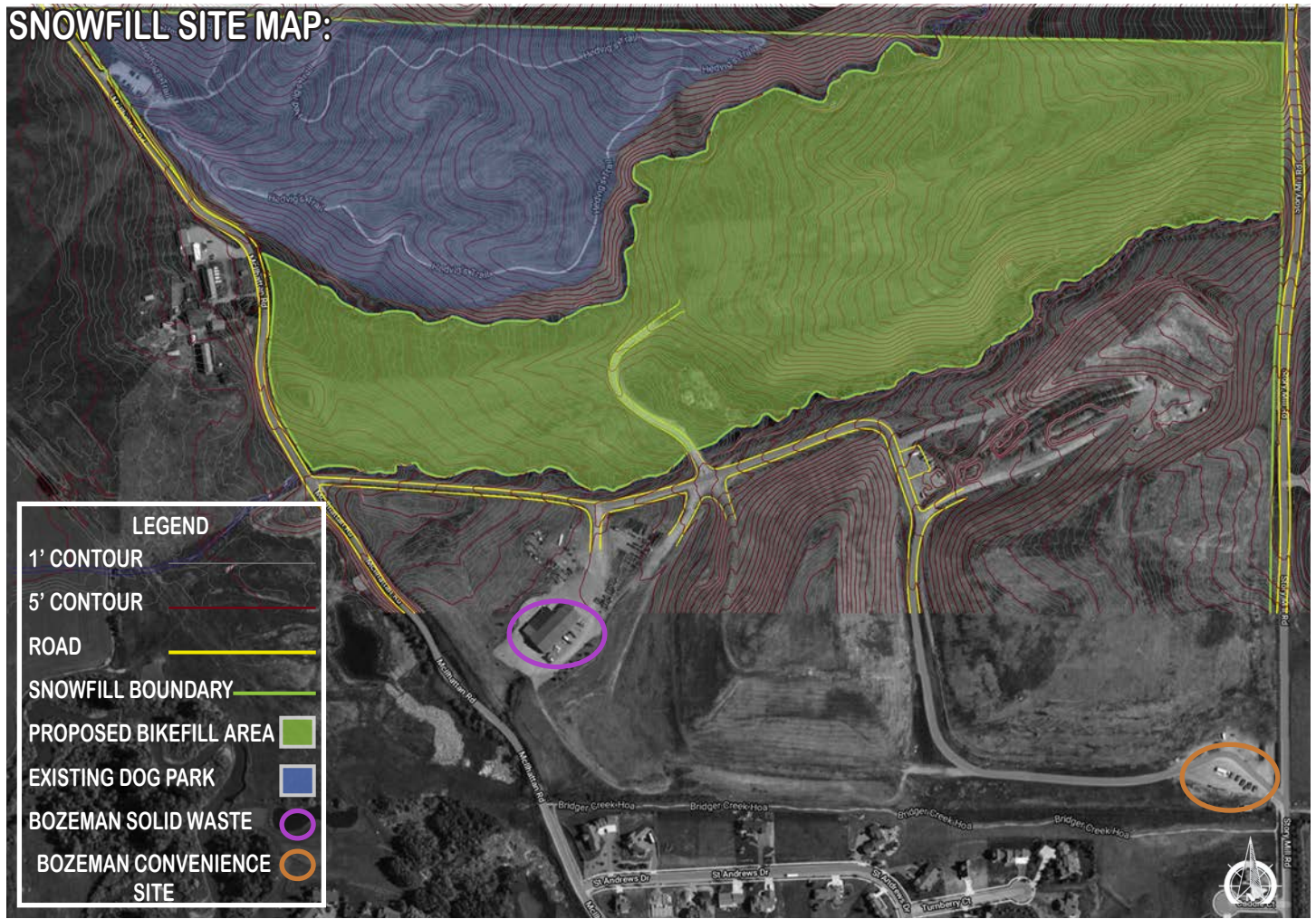


SITE:

Snowfill Recreation Area is located on the North East side of Bozeman at the base of the Bridger Mtn range. Adjacent to the “Bozeman Convenience Site” and Bozeman Solid Waste Department, the site sits between McIlhattan and Story Mill Rd. The proposed “Bikefill site is about 60 acres. The existing dog park is approximately 45. Totaling approximately 105 acres. The proposed area for “Bikefill” has approximately 200’ of elevation gain, which makes it a very ideal location for a bike park. Snowfill Recreation Area has also been expressed to be the desired location of “Bikefill” between city officials and land managers alike.



SNOWFILL SITE MAP:

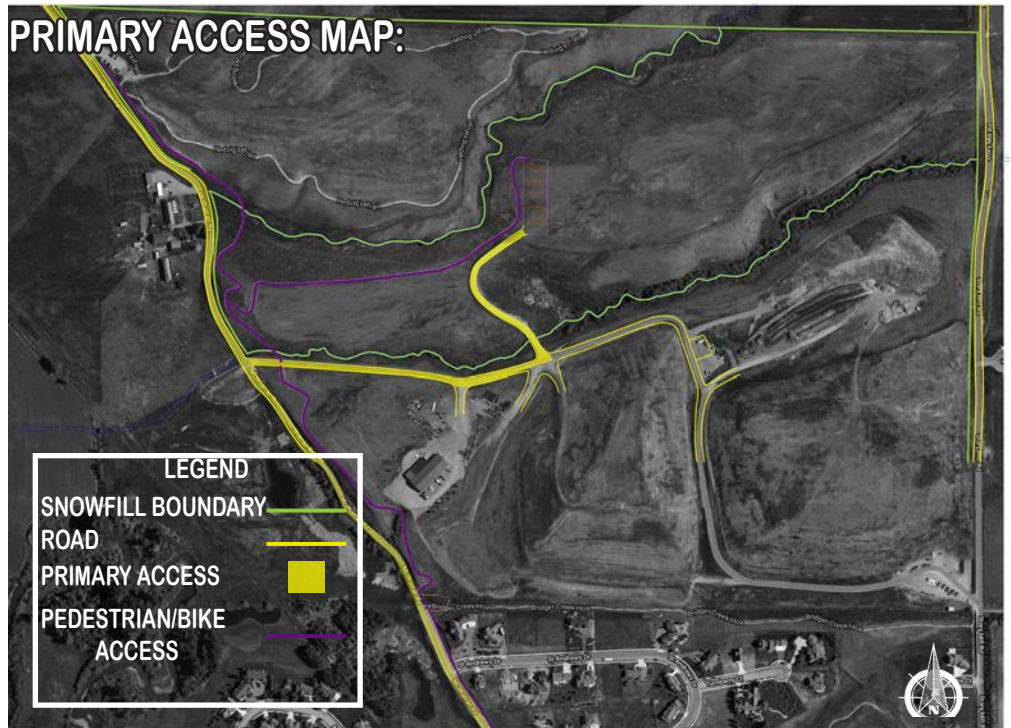


04 ACCESS

PRIMARY ACCESS:

Primary vehicular access to Bikefill will be off McIlhattan Road on the West end of the site. The main entrance is a current emergency access road for the Sold Waste Building. Additionally there would be a Main Street to Mountains Trail that would serve as pedestrian and bicycle access to the site. ALL access roads and trails could potentially be paved in the future. All vehicular access roads are existing roads that wont need to be constructed just re graded.

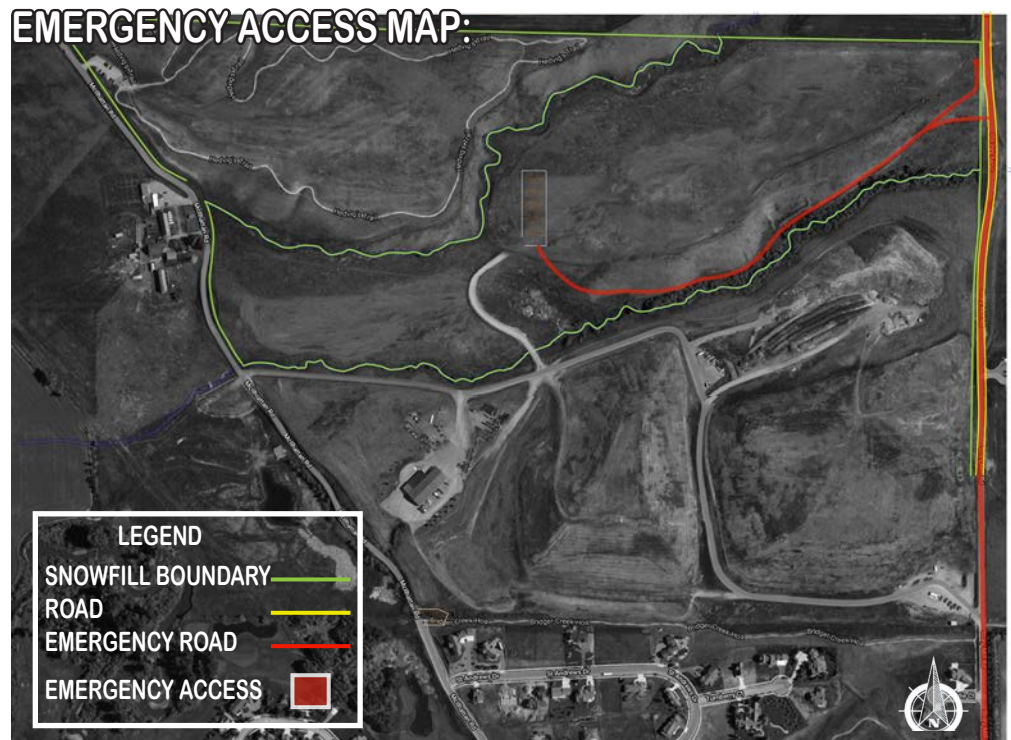
PRIMARY ACCESS MAP:



EMERGENCY ACCESS:

The emergency access road to Bikefill would be off Story Mill Road on the East end of the site. Currently this mostly pre existing haul road is the only point that has access to Story Mill. It is the safest entry point because of the limited site distance on Story Mill Road. Approximately 1200' would have to be excavated and completed around to the main parking lot.

EMERGENCY ACCESS MAP:



PRIMARY ACCESS DRONE IMAGE



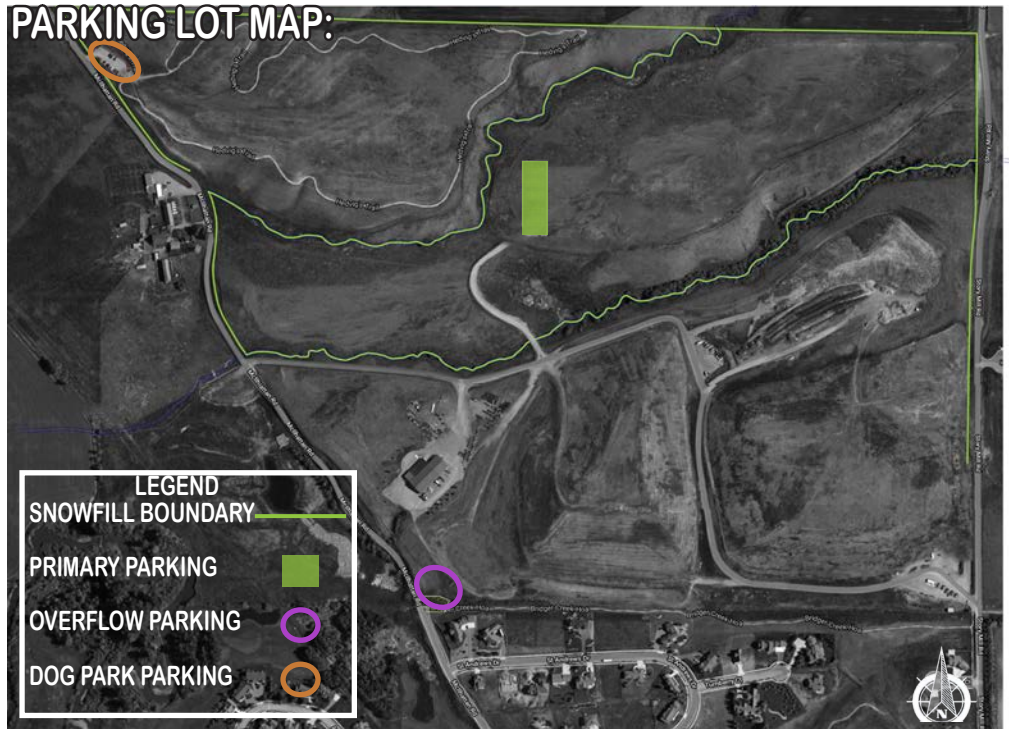
EMERGENCY ACCESS DRONE IMAGE



PARKING:

Bikefill will have two designated parking lots. One primary parking lot that splits the site into two general areas, an upper and lower half. This primary parking lot will hold up to 80 vehicles and provide for drop off and pick up. A second overflow parking lot located on the very south west corner of the Solid Waste department property line will accommodate an additional 25 vehicles. Additionally the dog park parking lot. Although not a designated parking lot but with trail access to bike fill it will no doubt be used as a parking lot on busier days.

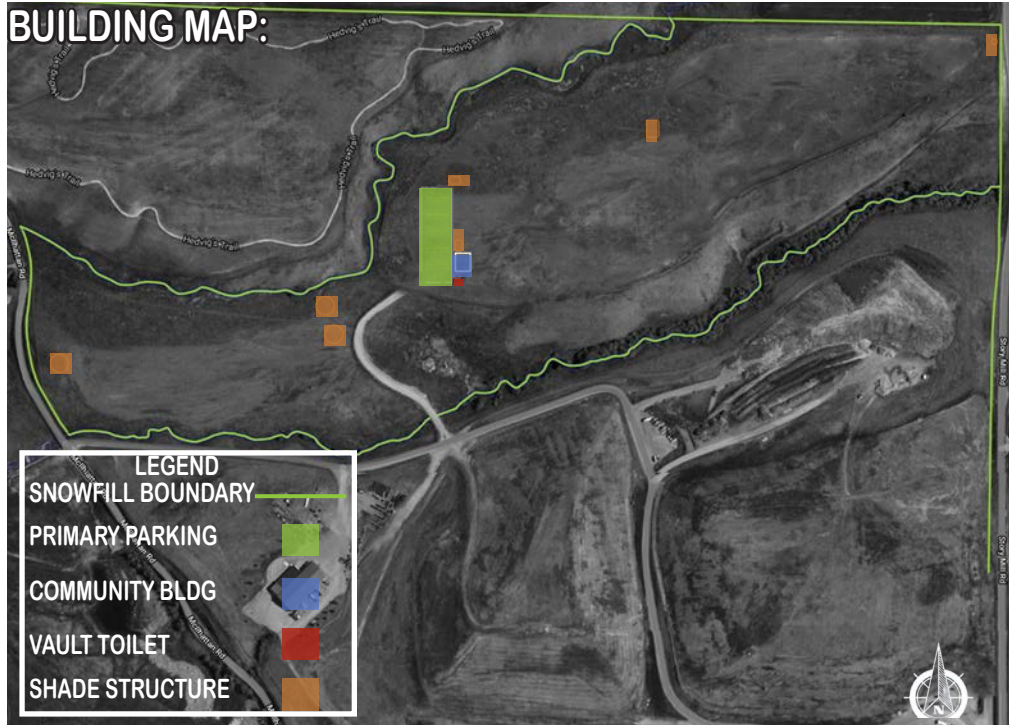
PARKING LOT MAP:



BUILDINGS:

It is proposed that Bikefill will have a number of built structures. The 6500 sq' community building will be located on the South East side of the primary parking lot. It will have bathrooms but there will also be a vault toilet located outside for bathroom access after business hours. There will also be a number of shade structures at trail heads viewing points and pump tracks.

BUILDING MAP:



PRIMARY PARKING AREA DRONE IMAGE



OVERFLOW PARKING AREA DRONE IMAGE



YOUTH / ENTHUSED CYCLISTS

PUMP TRACKS / SKILLS FEATURES / CROSS COUNTRY

YOUTH



ENTHUSED



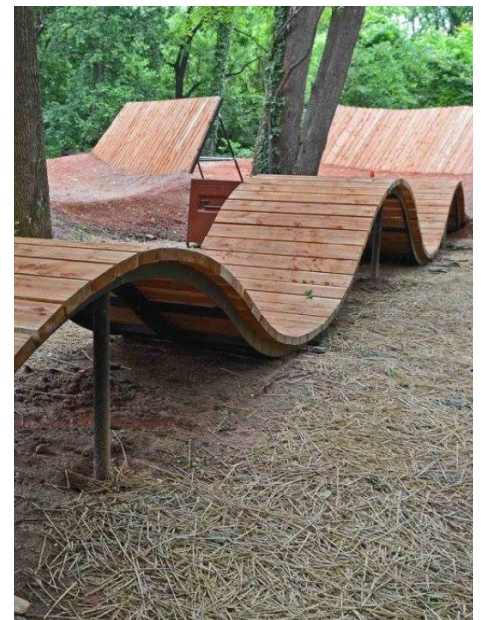
BEGINNER TRAILS:

Beginner trails and skill features are distinguished with a green color standard. This green designation is an industry standard and is easily recognized. These trails and features are intended for less experienced and younger riders that are working on their bicycle handling skills. These trails and features would total around 2000' excluding the pump track. They would be located on the lower half of the Bikefill site due to the more mellow topography change ease of access and proximity to the community building and parking lot. Although these trails and features are intended for beginner cyclists, riders of all abilities find these trails and features very fun.

PUMP TRACKS



SKILLS FEATURES



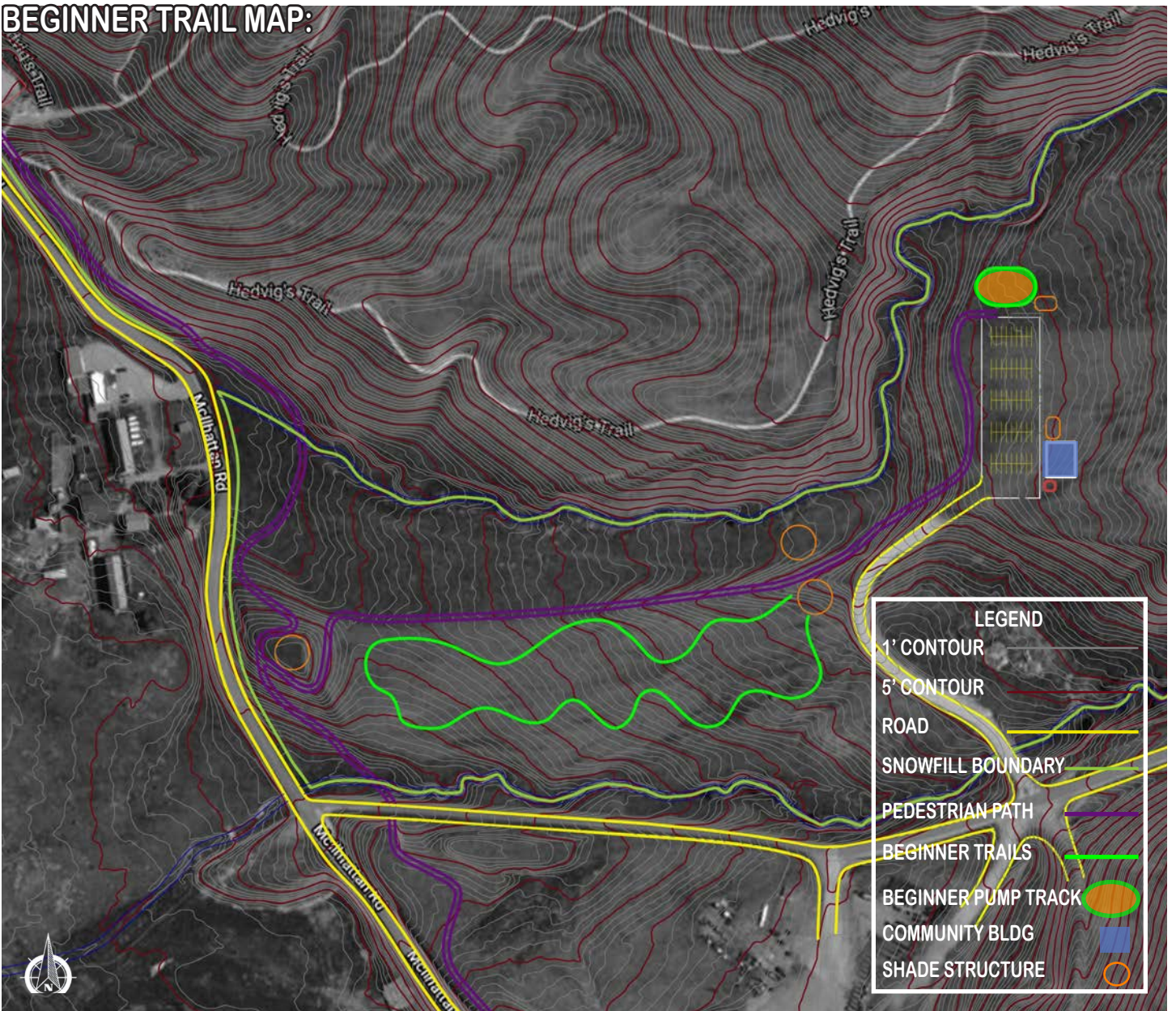
BEGINNER AREA DRONE IMAGE:



PUMP TRACK DRONE IMAGE:



BEGINNER TRAIL MAP:



CONFIDENT/ CYCLE CROSS

CROSS COUNTRY / CYCLE CROSS / XC FLOW

CONFIDENT



CYCLE-CROSS/GRAVEL



INTERMEDIATE TRAILS:

Intermediate trails and skill features are distinguished with a blue color standard. This blue designation is an industry standard and is easily recognized. These trails and features are intended for more experienced riders that are confident with their bicycle handling skills. These trails include more advanced skills features and cycle-cross specific features. Totalling over 4.5 miles these trails support the widest variety of skill level and are the most commonly used trails in most bike parks.

CROSS-COUNTRY
& XC FLOW TRAILSCYCLE-CROSS &
STAIR FEATURES

DIRT JUMP / BMX / GRAVITY / FREERIDE RYTHM / GRAVITY FLOW TRAILS

ADVANCED TRAILS:

Advanced trails and skill features are distinguished with a black color standard. This black designation is an industry standard and is easily recognized. These trails and features are intended for the most experienced riders these trails require high speeds and precise rhythm skills. These trails include the most advanced skills features with jumps and technical characteristics. Totaling approximately 4700' these trails require the most topographical change material for construction and cost per foot.

DIRT JUMP/BMX



GRAVITY/FREERIDE



DIRT JUMP/BMX & RHYTHM FEATURES



GRAVITY & FREERIDE FLOW TRAILS



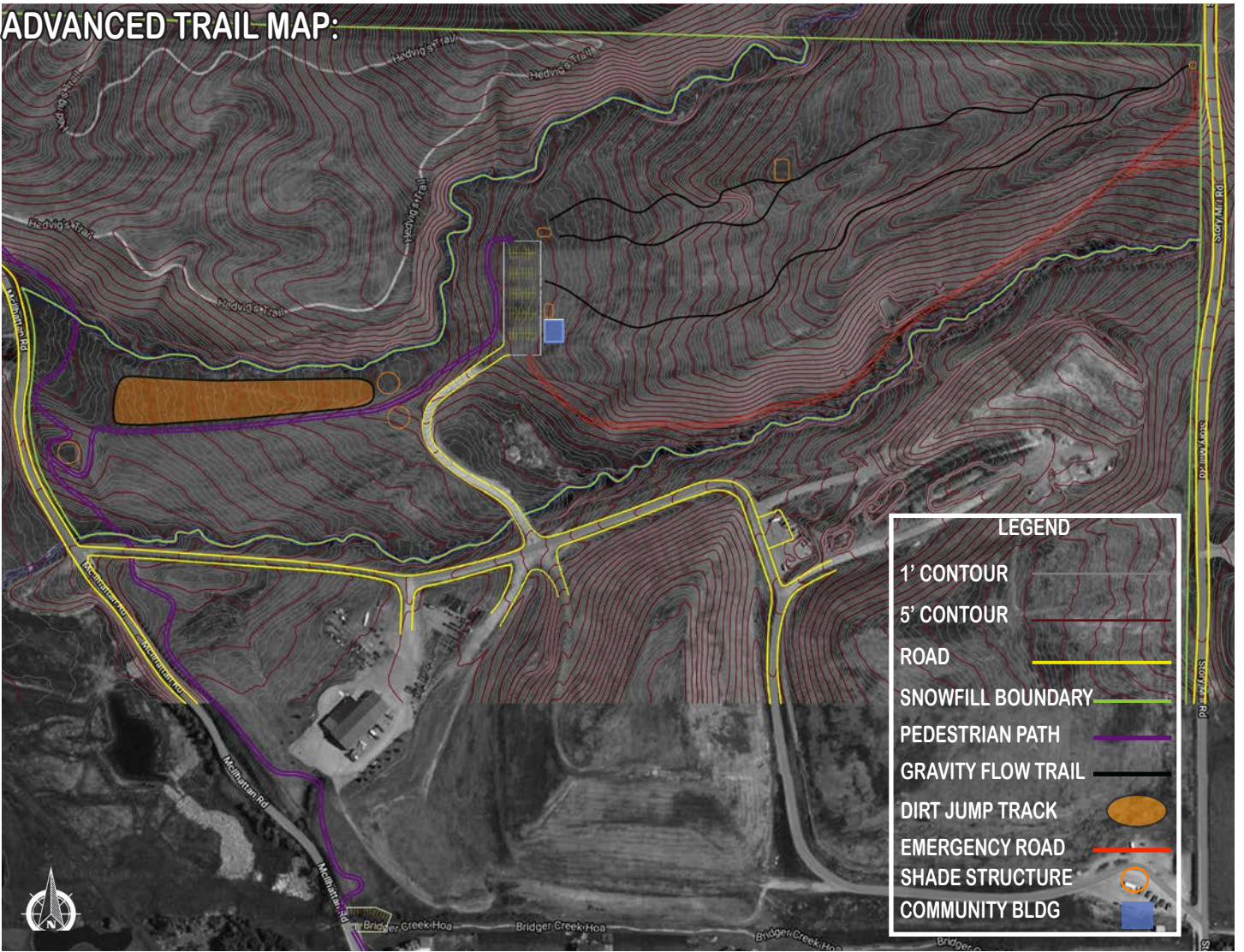
ADVANCED FLOW AREA DRONE IMAGE:



DIRT JUMP AREA DRONE IMAGE:



ADVANCED TRAIL MAP:



COMPLETE TRAIL MAP:

